

**industrialpartners**

**THINK DISCOVER DO**

**industrialpartners IS A GERMAN team of  
DESIGNERS AND ENGINEERS WHO IS  
specialized in industrialdesign and the  
development of TECHNICAL industrial  
PrODUCTS FOR MASS SERIES**

**industrialpartners works especially in  
the FIELD of REMOTE CONTROLS.  
WE are developing products, injection  
moulds and care for the production of  
the developed parts.**



FMEA-Workshop  
Trendscan  
Materialscan  
Competition overview  
Specification sheet  
Ergonomic studies

Revision Design Phase  
3D-CAD-Data  
Elaborated technical solutions  
Case structure  
Assembling process  
Premodels

Design engineering  
3D-CAD-Data  
Functional models  
Rapid prototypes  
Assembling process

## > 1. Concept

## > 2. Industrialdesign

## > 3. Design Engineering

## > 4. Prototyping



Preliminary Design Phase  
3D-CAD-Data  
Basic technical solutions



1:1 Scale prototype

**Project schedule for ROBBE GmbH, Germany**  
Development of a remote control

# Task

## › Task

Redesign of an existing remote control  
Analysis of the ergonomic situation  
Delivery of all parts to our customer

## › Results

1:1 Prototype  
3D-Data  
Sourcing of a manufacturer of the moulds and parts  
Binding offer for the production of all plastic parts  
Quality control during production of all parts  
Delivery of all parts to our customer



## Project schedule for ROBBE GmbH, Germany

Development of a remote control

# 1. Concept › 2. Industrialdesign › 3. Design Engineering › 4. Prototyping › 5. Moulds › 6. Production

## › Tools

Kick-Off-Workshop  
with FMEA  
Trendscan  
Materialscan  
Competition overview  
Ergonomic and usability studies

## › Results

Design briefing  
Specification sheet  
Basic technical solutions

**Project schedule for ROBBE GmbH, Germany**

Development of a remote control / Concept Phase / Workshop



## 1. Concept › **2. Industrial design** › 3. Design Engineering › 4. Prototyping › 5. Moulds › 6. Production

### › **Tools**

Preliminary Design Phase  
Revision Design Phase

Presentation after each phase  
Intermediate presentations

3D-CAD  
Premodels

### › **Results**

Different design variants  
Basic technical solutions  
Basic assembling concept for the case

Elaboration of a selected design variant  
Premodel on a scale 1:1  
Elaborated technical solutions  
Proposals for product graphic design

Briefing of selected mould manufacturer  
Offer for moulds and parts





**industrialpartners**



## Project schedule for ROBBE GmbH, Germany

Development of a remote control / Preliminary Design Phase

Developed by **industrialpartners**





## Project schedule for ROBBE GmbH, Germany

Development of a remote control / Design Phase

Developed by **industrialpartners**



## Project schedule for ROBBE GmbH, Germany

Development of a remote control / Design Phase

Developed by **industrialpartners**



## Project schedule for ROBBE GmbH, Germany

Development of a remote control / Revision Design Phase / 1:1 Premodel

Developed by **industrialpartners**

1. Concept › 2. Industrialdesign › **3. Design Engineering** › 4. Prototyping › 5. Moulds › 6. Production

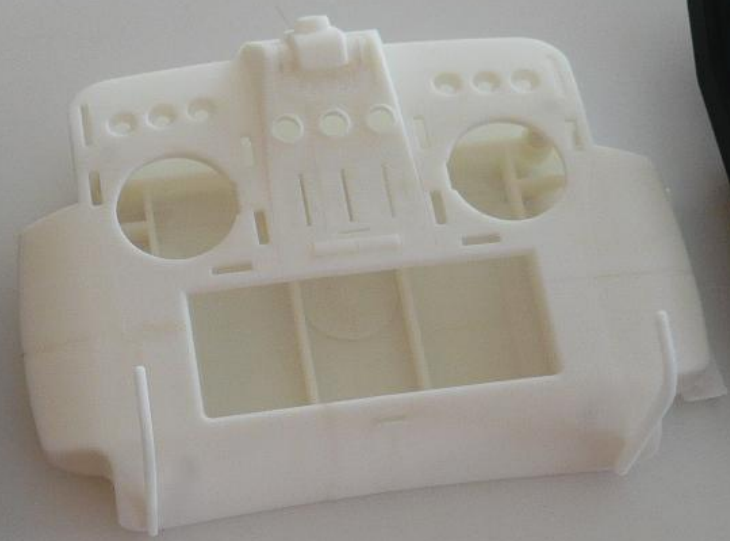
› **Tools**

Solidworks  
Rapid-Prototyping

› **Results**

3D-Data  
2D-Drawings  
Elaborated assembling concept  
Elaborated service concept  
  
Binding offer for moulds and parts







1. Concept › 2. Industrialdesign › 3. Design engineering › **4. Prototyping** › 5. Moulds › 6. Production

› **Tools**

Rapid-Prototyping

› **Results**

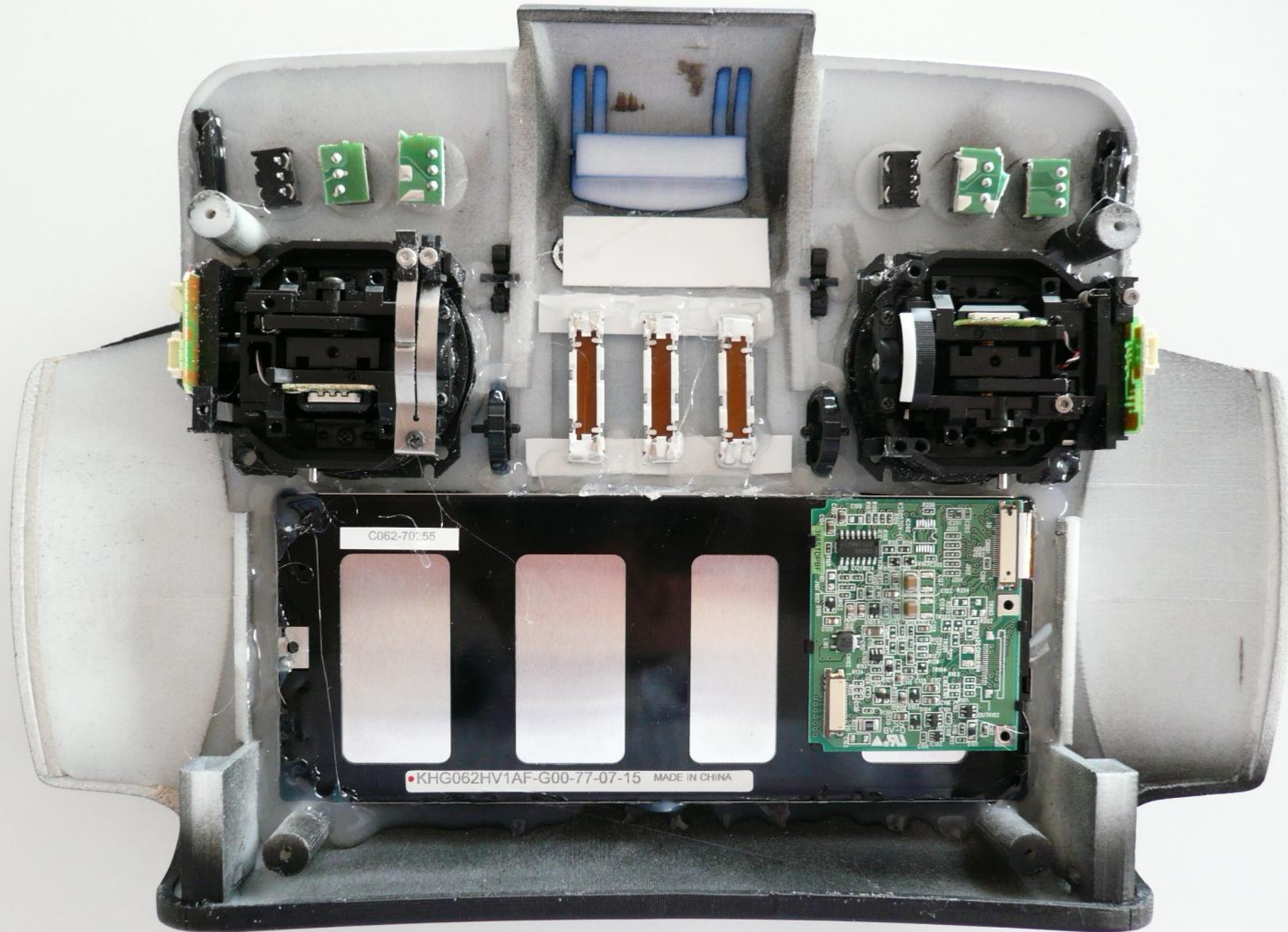
1:1 Scale Prototype



**Project schedule for ROBBE GmbH, Germany**

Development of a remote control / Prototyping / 1:1 Prototype

Developed by **industrialpartners**



## Project schedule for ROBBE GmbH, Germany

Development of a remote control / Prototyping / 1:1 Prototype

Developed by **industrialpartners**





## **Project schedule for ROBBE GmbH, Germany**

Development of a remote control/ Prototyping / 1:1 Prototype

Developed by **industrialpartners**

# CONTACT

## Your Contact in Germany

### **industrialpartners GmbH**

Jens Arend  
Gwinnerstraße 34-36  
60388 Frankfurt am Main

FON: 00 49 / (0)177 / 312 60 07  
E-MAIL: [ja@industrialpartners.de](mailto:ja@industrialpartners.de)  
INTERNET: [www.industrialpartners.de](http://www.industrialpartners.de)

### **industrialpartners GmbH**

Jens Schnur  
Alte Strasse 22  
64743 Beerfelden

FON: 00 49 / (0) 60 68 / 9 30 02 – 41  
E-MAIL: [js@industrialpartners.de](mailto:js@industrialpartners.de)  
INTERNET: [www.industrialpartners.de](http://www.industrialpartners.de)

## Your Contact in the P.R. China

### **industrialpartners (Tianjin) Co. Ltd.**

Yigang Wang  
Wanliucun Road 56  
Green Leader Park A6-1  
300241 Tianjin P.R. China

FON: 0086 022 8641 0531  
MOBILE: 0086 186 9807 4741  
E-MAIL: [yw@industrialpartners.de](mailto:yw@industrialpartners.de) / [77950130@qq.com](mailto:77950130@qq.com)  
INTERNET: [www.industrialpartners.com.cn](http://www.industrialpartners.com.cn)